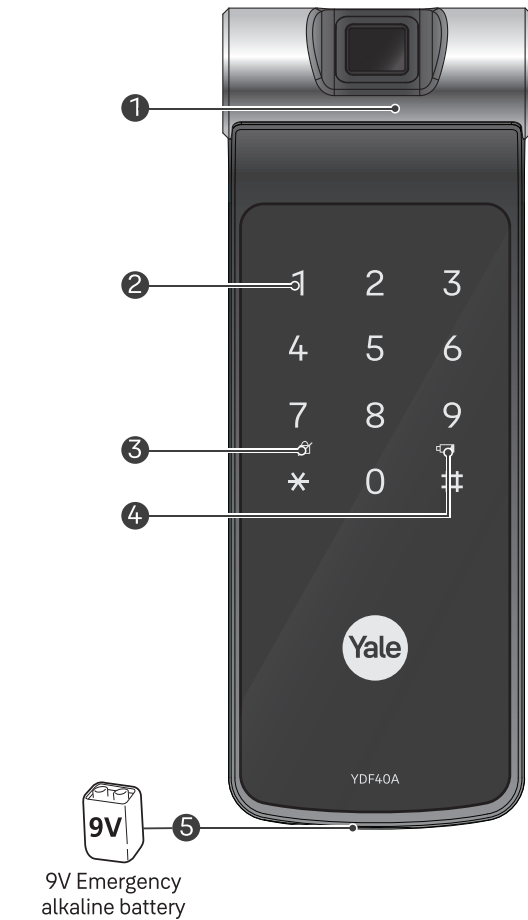


### 1. Front Body (Front Body, installation on the outside of the door)



### 2. Basic Contents

**Basic Contents**

- Front Body
- Main Body
- Dead Bolt & Strike Plate

**Optional Accessories**

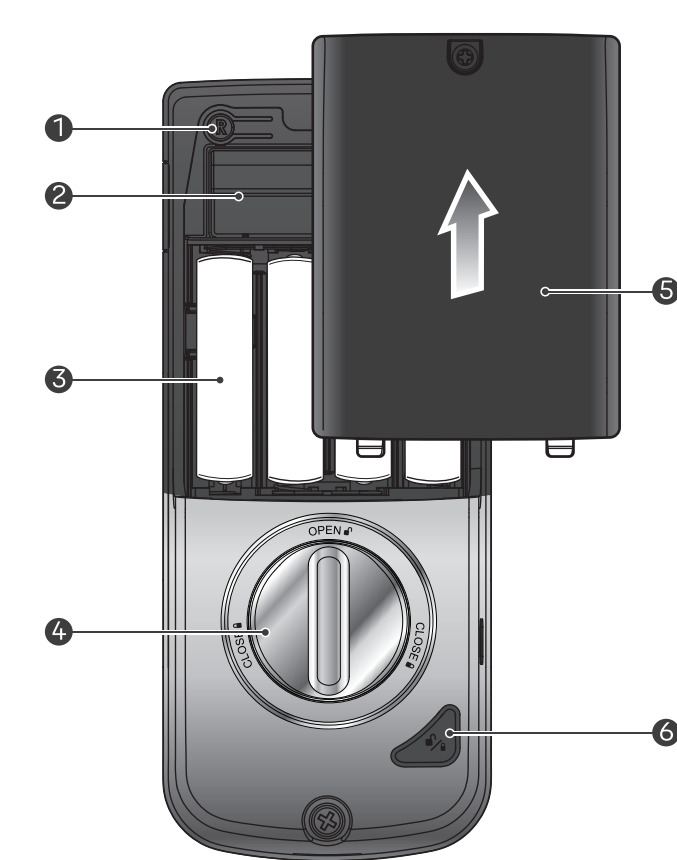
- Thin door gasket
- User Manual
- Installation Guide
- Screws
- AA Batteries X4
- Remote Controller
- Remote Control Module
- Bluetooth Module

### 3. Specifications

Parts	Specifications	Remarks
Front Body	66(W) X 176(H) X 31.5(D), Zinc die-casting	Operating temperature -15~55°C (5~131°F)
Main Body	70(W) X 170(H) X 35(D), ALDC	
User code	100 different User codes	Up to 100 User code
Fingerprint	100 different fingerprints	Up to 100 fingerprints
Works for	4EA 1.5V AA Alkaline batteries (Operating voltage: 4.5~6V)	Last up to 1 year (10 times used a day)
Optional Remote Controller	Wireless	Optional

※ Battery life may vary depending on temperature, moisture levels, frequency of use and the quality of battery used.  
※ Please make sure that all parts are included when purchasing the product.  
※ Optional products may not be available depending on your country or local dealer.

### 4. Main Body (Main Body, installation on the inside of the door)



### 5. Front Body

1	Fingerprint Module
2	Keypad(10-key)
3	Dead Bolt Jam Lamp
4	Low Battery Indicator
5	Emergency Power Supply Terminal

### 6. Main Body

1	Ⓡ Registration button
2	Module Accessory Slot (Optional)
3	1.5V AA Alkaline Batteries (4PCS)
4	Thumb Turn Knob
5	Battery Cover
6	Open / Close button

### 7. Setting Menu

**Master Mode:** Only a designated person who knows 'Master PIN Code' has authority to set features.

**Normal Mode:** If no user is assigned with master code without a designated person, anyone who knows 'User PIN Code' has authority to set features.

**Visitor Code:** Users with Visitor Code can only open the door with no access to change settings.

**Onetime Code:** The onetime code is used only once for unlocking the door lock and automatically deleted after usage.

**User Slot Number:** It should be 2 digits(like '01', '02'...'99', '00') and available in advanced mode.

	Touch the Keypad of the Front Body with your palm to begin
	Press  button on the Keypad
	Press  button on the Keypad
	Press  (Registration) button in every steps to start or complete the session
	Enter User Fingerprint (Up to 100 Users)
	Enter User Code (4 ~ 10 digits)
	Enter Master Code (4 ~ 10 digits)
	Enter Visitor Code (Only 4 digits)
	Enter Onetime Code (Only 4 digits)
	User Slot Number should be 2 digits (like '01' ... '99' and '00'; Location of 100th user slot must be assigned "00" instead of "100". )
	Rotation area to add more features

### 8. Product Features

**One Touch Fingerprint Access** .....  
Secure one Touch Live fingerprint detection for personalized access. Unique Sensor not only provides high security but faster unlocking experience as well.

**Yale Access App** .....  
Yale Access gives you the peace of mind of knowing who and what you love is safe - no matter where you are- just at the touch of your smartphone.

**Smart Touchpad – Auto Lock** .....  
The door Locks when you touch the palm on the keypad.

**3 minute Lock Out Feature** .....  
After five (5) unsuccessful attempts of an invalid code or fingerprint, lock out mode is activated for 3 minutes.

**Smart Etiquette** .....  
When entering a pin code on the keypad, the user can open the door lock in silent mode.

**Fake PIN Code** .....  
Security enhancement to enter any number before or after entering a password to prevent the PIN code from being exposed.

**Internal Forced Lock** .....  
It is a security-enhancing function that 'disables' authentication methods such as passwords and fingerprints from outside when setting up functions indoors.

**External Forced Lock** .....  
It is a security-enhancing function that an alarm goes off if someone opens door from inside when setting up functions outside.

**Voice Guidance** .....  
It guides you through the operation status on how to enable various features & settings- mode for easier and more convenient use.

- Other features and Benefits** .....
- Remote Controller (Optional):  
This option may not be available depending on your country or local dealer.
  - Network Module/Controller (Optional):  
It allows door lock to connect with Home network controller.
  - Intrusion/Broken Alarm.
  - Low Battery Alarm and Emergency Power Supply.

### 9. Normal Mode (Default Mode)

Normal mode is for convenient mode for anyone with user code to change various settings

1 12 (Registration process) Continue / Complete

	1	2	3	4	5	6	7	8	9	10	11	12
<b>User Code</b> Only 1 User												
Registr-ation												
<b>Fingerprint</b> Up to 100 Users												
Registr-ation					OR							
<b>Visitor Code</b> Only 1 User												
Registr-ation								OR				
Delete								OR				
<b>Onetime Code</b> Only 1 User, Automatically deleted after use												
Registr-ation										OR		
Delete								OR				
<b>Delete all fingerprint credentials</b>												
Delete								OR				
<b>Automatic Lock</b>												
Enable										OR		
Disable										OR		
<b>Volume Control</b>												
High										OR		
Low										OR		
Mute										OR		

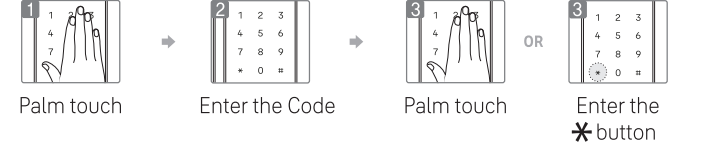
**Language Change**

Registr-ation								Korean			OR	
								Chinese			OR	
								English			OR	
								Taiwanese			OR	
								Spanish			OR	
								Portuguese			OR	
<b>Bluetooth setting (Yale Access app)</b>												
Registr-ation					Set up a new device in the app							
<b>Remote Controller</b> Up to 5 Users												
Registr-ation										OR		
Delete								OR				
<b>Home Network Controller</b>												
Registr-ation										OR		
Delete								OR				
	<b>Remote Controller</b> Set with registration button located on the top of remote controller. You can press it using a pin like the one shown in the image.											

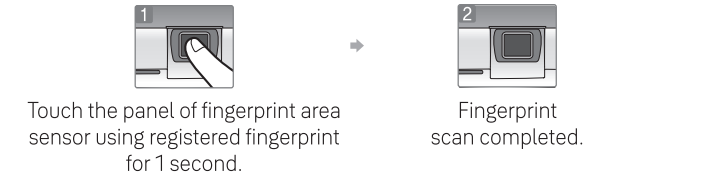
**Please note following when pairing lock with Yale Access App.**

- Depending on product type or FW version, app registration and door lock connection in normal mode may not be possible, so if registration is not possible, change from normal mode to master mode and try again.  
[ App Registration in Master Mode: Master Pin Code-> R (Registration Button)-> 7-> # ]
- Because Yale Access Bluetooth App is only available in master mode, user code automatically changes to master code when registering APP in normal mode.
- Please be informed that all registered credentials will be deleted when changing mode or registering and deleting app.

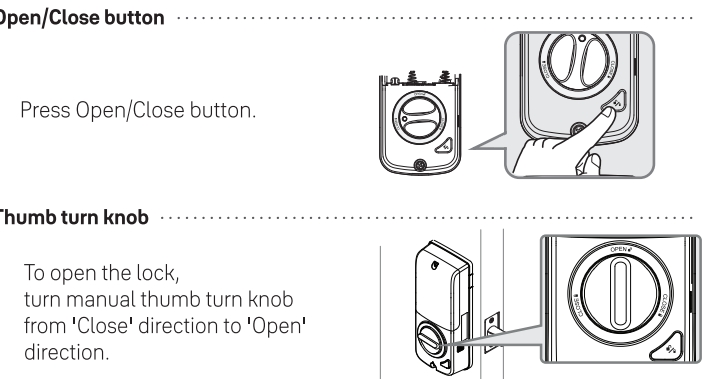
### 10. Unlocking Door with Code



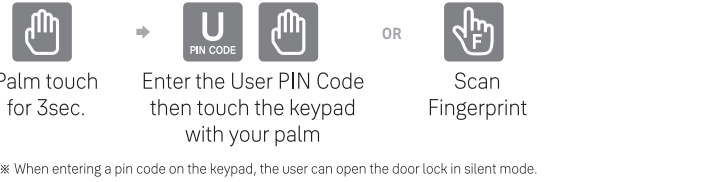
### 11. Unlocking Door with Fingerprint



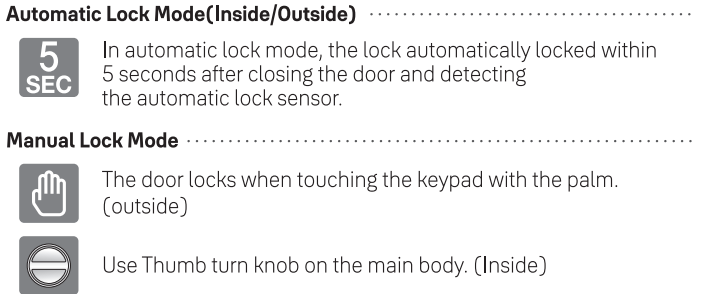
### 12. Opening Door (Inside/Outside)



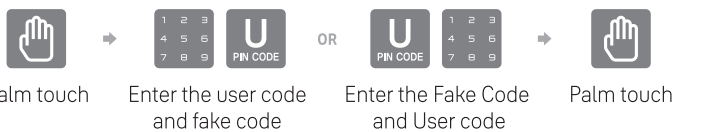
### 13. Unlocking Door with Smart Etiquette



### 14. Locking the Door (Inside/Outside)



### 15. Unlocking Door with Fake Code





### Enable External Forced Lock : Fingerprint

Scan with registered Fingerprint and hold the fingerprint area until you hear 3 beep sounds.

### Enable External Forced Lock : User Code

Palm touch      Enter the User PIN Code      Enter the **#** button for 5 Sec.

### Disable External Forced Lock

When the door is unlocked from outside based upon proper authentication, the External forced lock will be released.

## 17. Inside Forced Lock Setting

#### Setting

Press Open/Close button for 3 seconds until you hear "pik" beep.

#### Release

Method 1 : Press Open/Close button for 3 seconds until you hear "pik" beep.

Method 2 : Turn manual thumb turn knob


Turn it

- ※ If you try to open a door with the manual thumb turn knob from inside when the Outside Forced Lock is set, the alarm goes off.
- ※ If the Inside Forced Lock is set, any attempt to open a door from outside whether it's be a Fingerprint or code won't work.

**Intrusion Alarm** : The alarm goes off when someone forces the door open. For example, In case of an intrusion by opening a gap in the door while the door is locked.

**Broken Alarm (Breakage Alarm)** : The alarm goes off when the front part is completely separated from the main set. For example, forced removal of external product (front body).

**Turn off alarm** .....

- Enter the registered User code.
- Press  button for 5 seconds.
- Enter the registered Fingerprint.

[illegible]

Master mode is a mode in which only the administrator can set the door lock and provide access to other users. 100 users passwords, 100 users fingerprint and individual registration and deletion of one-time passwords enable efficient management of visitors.

1	2	3	4	5	6	7	8	9	10	11	12	13	14
14 (Registration process)													
* Continue / (R) Complete													

### Switch to master mode (from normal mode)

Change Mode	U	R	4	#	1	#	M	#	M	R
	NEW CODE						NEW CODE		NEW CODE	AGAIN

### Master Pin Code Change

Only 1 User

Registration	M	R	1	#	M	#	M	#	*	R
	NEW CODE				NEW CODE		NEW CODE			

### User Code

Up to 100 Users

Registration	M	R	2	#	1	#	UN	#	U	#	*	R
	NEW CODE								NEW CODE			
Delete			3	#	UN	#	*	R				

### Fingerprint

Up to 100 Users

Registration	M	R	3	#	1	#	UN	#	8times	*	R
	NEW CODE										
Delete			3	#	UN	#	*	R			

### Onetime Code

Only 1 User, Automatically deleted after use

Registration	M	R	4	#	1	#	0	#	*	R
	NEW CODE						NEW CODE			
Delete			3	#	M	#	*	R		
					NEW CODE					

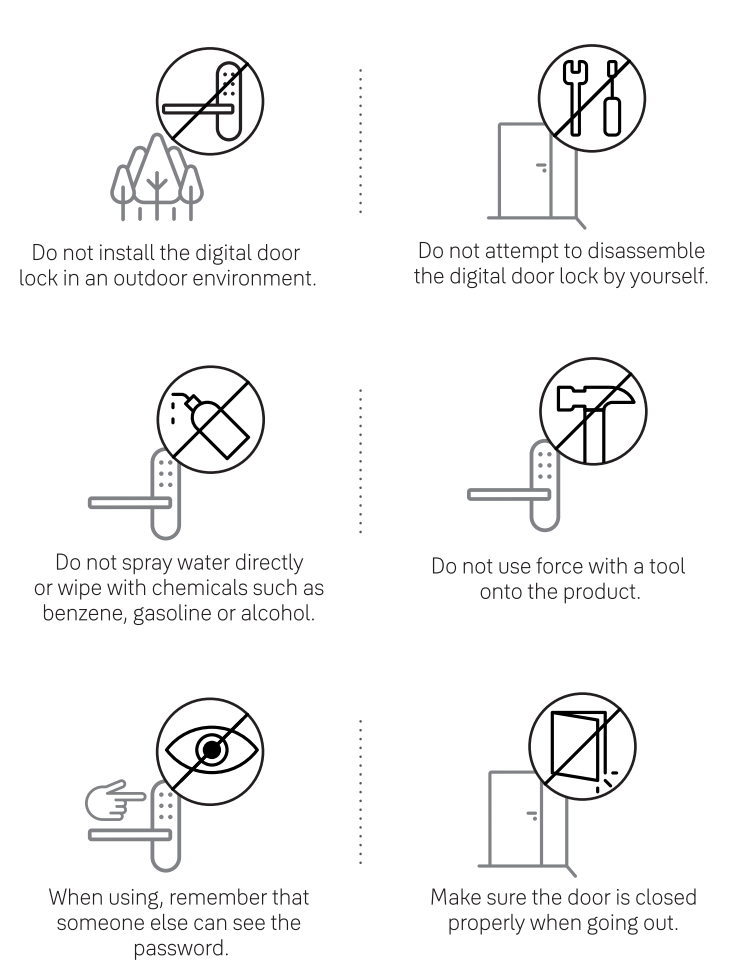
### Delete all credentials

Delete	M	R	5	#	M	#	*	R
	NEW CODE				NEW CODE			

### Automatic Lock

Enable	M	R	6	#	2	#	1	#	*	R
	NEW CODE									
Disable			3	#	*	R				

\* UN User Slot Number should be 2 digits.  
like '01' ... '99' and '00': Location of 100th user slot must be assigned '00' instead of '100'.



- Do not install the digital door lock in an outdoor environment.
- Do not attempt to disassemble the digital door lock by your self.  
By doing so, you may get an electronic shock and damage the product.
- Do not use force with a tool onto the product.
- Make sure to lock the door tight when you go out.
- Do not use water and any type of solvent to clean the product  
such as gasoline or benzene as they can cause damage to  
electronic circuit, deterioration and or paint peel-off.
- It is recommended to change User Code on a regular basis.
- In manual lock mode, make sure to double check  
whether the door is securely locked.
- When External Forced lock is set and unlock the door,  
the alarm will be activated.
- Do not use rechargeable batteries.  
Only alkaline batteries are recommended.
- Make sure to follow the above instructions to avoid any injuries.
- It cannot be guaranteed in a special conditions & environment such as  
water condensation, seaside.
- Warranty will not cover- exposure to dampness, excessive heat,  
excessive humidity and other extreme environmental conditions,  
corrosion, damage beyond repair, rusting, unauthorised modifications,  
unauthorised repairs, neglect, accident, alteration, acts of God,  
spillage of liquid or food particles.

The image shows the front cover of a Yale YDF40A User Guide. At the top left is the Yale logo, which consists of the word "Yale" in white serif font inside a dark grey circle. The main title "User Guide" is centered in a large, bold, black sans-serif font. Below it, the model number "YDF40A" is centered in a white sans-serif font inside a dark grey rounded rectangle. Underneath the model number, the text "Fingerprint / PIN Code" is centered in a smaller, grey sans-serif font. At the bottom left, the text "Part of ASSA ABLOY" is written in a small, grey sans-serif font.