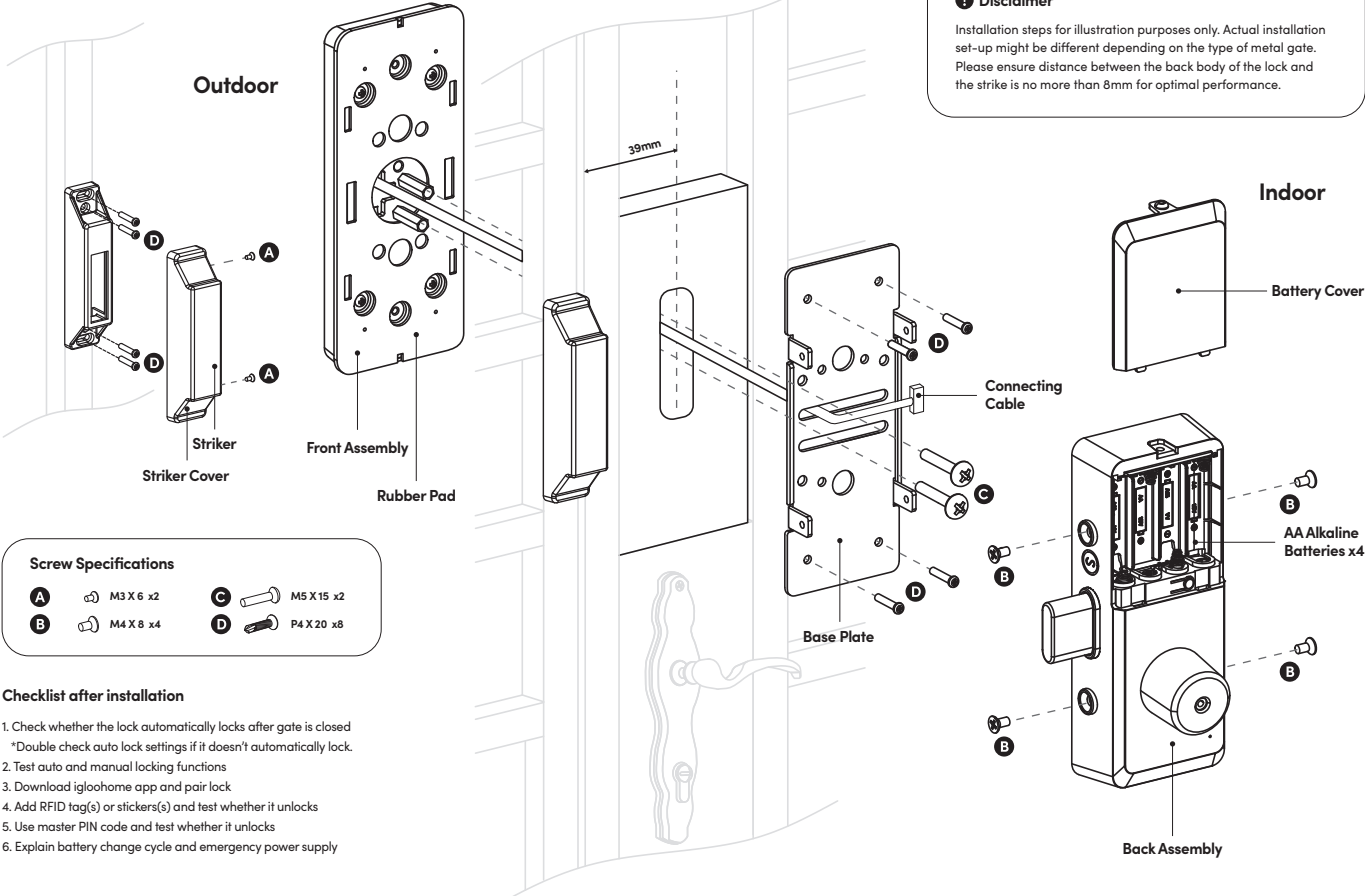


Installation Guide

Metal Gate

Disclaimer

Installation steps for illustration purposes only. Actual installation set-up might be different depending on the type of metal gate. Please ensure distance between the back body of the lock and the strike is no more than 8mm for optimal performance.



Drill Sheet

Version 0.1 10/20

Metal Gate (Lock Side)

METHOD 1 FRONT STRIKER

If installing the striker on the same plane as the indoor unit, place drill sheet on the inside gate/door surface and align this line with gate/door edge for drilling.

Backset = 39mm

METHOD 1 SIDE STRIKER

If installing the striker sideways to indoor unit, place drill sheet on the inside gate/door surface and align this folded line with gate/door edge for drilling.

Backset = 69mm

Back Assembly

Ø 32mm

Hole is already pre-cut on wooden block if using that for installation

For best performance, ensure distance between striker and indoor unit is ≤ 8mm

≤ 8mm

168mm

