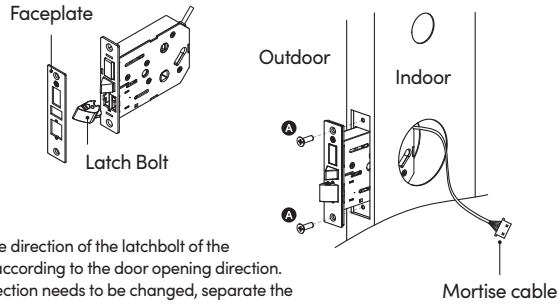


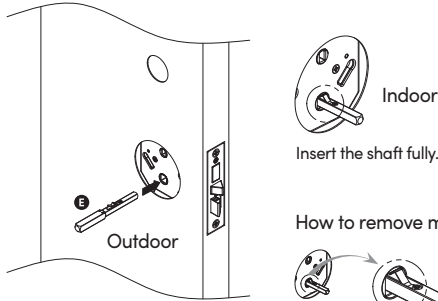
1. Installing mortise

When inserting the mortise to the door, make sure the mortise cable is pulled out towards the inside of the house.



Check the direction of the latchbolt of the mortise according to the door opening direction. If the direction needs to be changed, separate the face plate from the mortise and change the direction of the latchbolt.

2. Installing mortise shaft



Insert the mortise shaft towards the arrow from the outside.



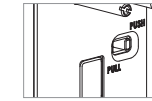
Insert the shaft fully.

How to remove mortise shaft

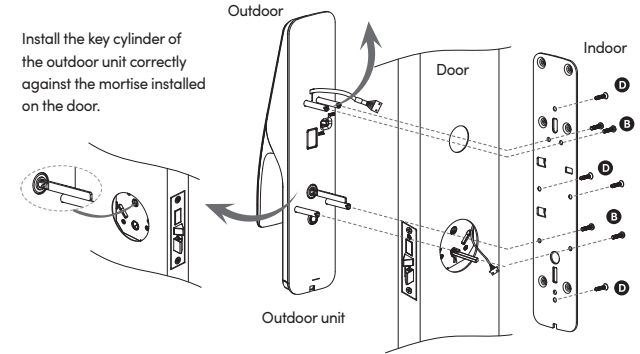


Press the shaft leaf spring with a sharp tool and push the shaft in the opposite direction.

3. Installing outdoor unit

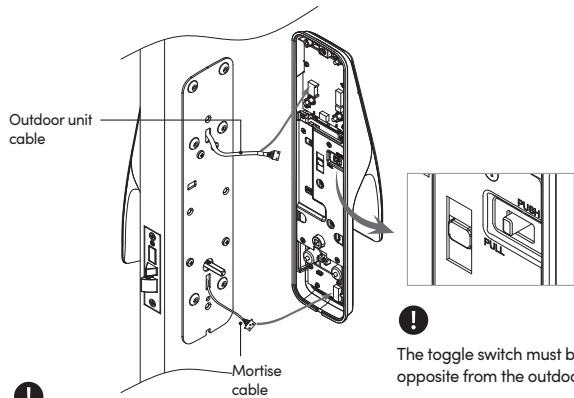


Check the PULL/PUSH toggle switch before installation.
- left : Pull (Out-swing)
- Right : Push (In-swing)



Install the key cylinder of the outdoor unit correctly against the mortise installed on the door.

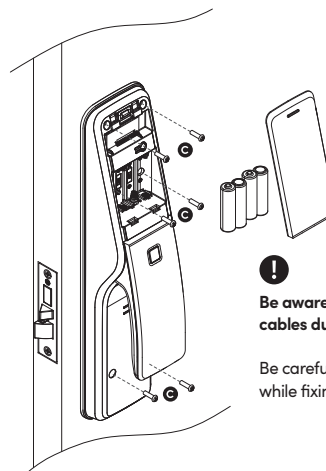
4. Connecting cable



Be aware not to damage the cables during installation.

The toggle switch must be the opposite from the outdoor body.

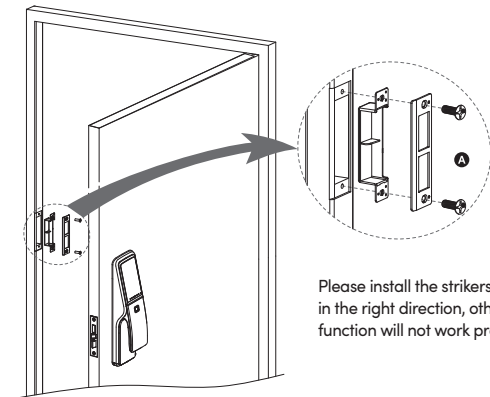
5. Installing indoor unit



Be aware not to damage the cables during installation.

Be careful not to damage the cables while fixing the indoor plate.

6. Installing striker



Please install the strikers and dust box in the right direction, otherwise auto lock function will not work properly.

Checklist after installation

1. Check whether the mortise automatically locks after door is closed.
* Double check auto lock settings if it doesn't automatically lock.
2. Test auto and manual locking function.
3. Download igloohome app and pair lock
4. Add RFID tag(s) or sticker(s) and test whether it unlocks.
5. Add fingerprint(s) and test whether it unlocks.
6. Use master PIN code and test whether it unlocks.

7. Explain Child & Pet Safety Function.
8. Explain battery change cycle and emergency power supply.

Caution

Check the type and thickness of the door for the installation.
If any extra panel has to be added, please make sure the door thickness states the original thickness plus the added thickness.

Screw Specifications

- A** ST FH 4 X 20 x4
- B** BH M5 X 20 x4 for 40 - 50mm door
- C** BH M5 X 45 x4 for 50 - 70mm door
- D** PH M4 X 14 x6
- D** ST FH 4 X 20 x4

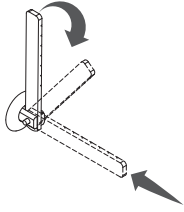
Mortise Shaft Specifications

- E** Shorter Shaft for 40 - 50mm door
- Longer Shaft for 50 - 70mm door

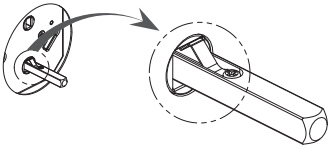
Installation Guide

Outdoor

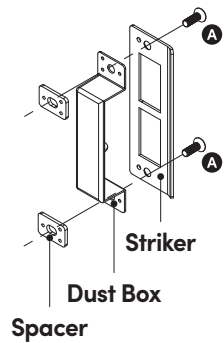
Straighten the key tail before installation.



How to remove mortise shaft



Press the shaft leaf spring with a sharp tool and push the shaft in the opposite direction.

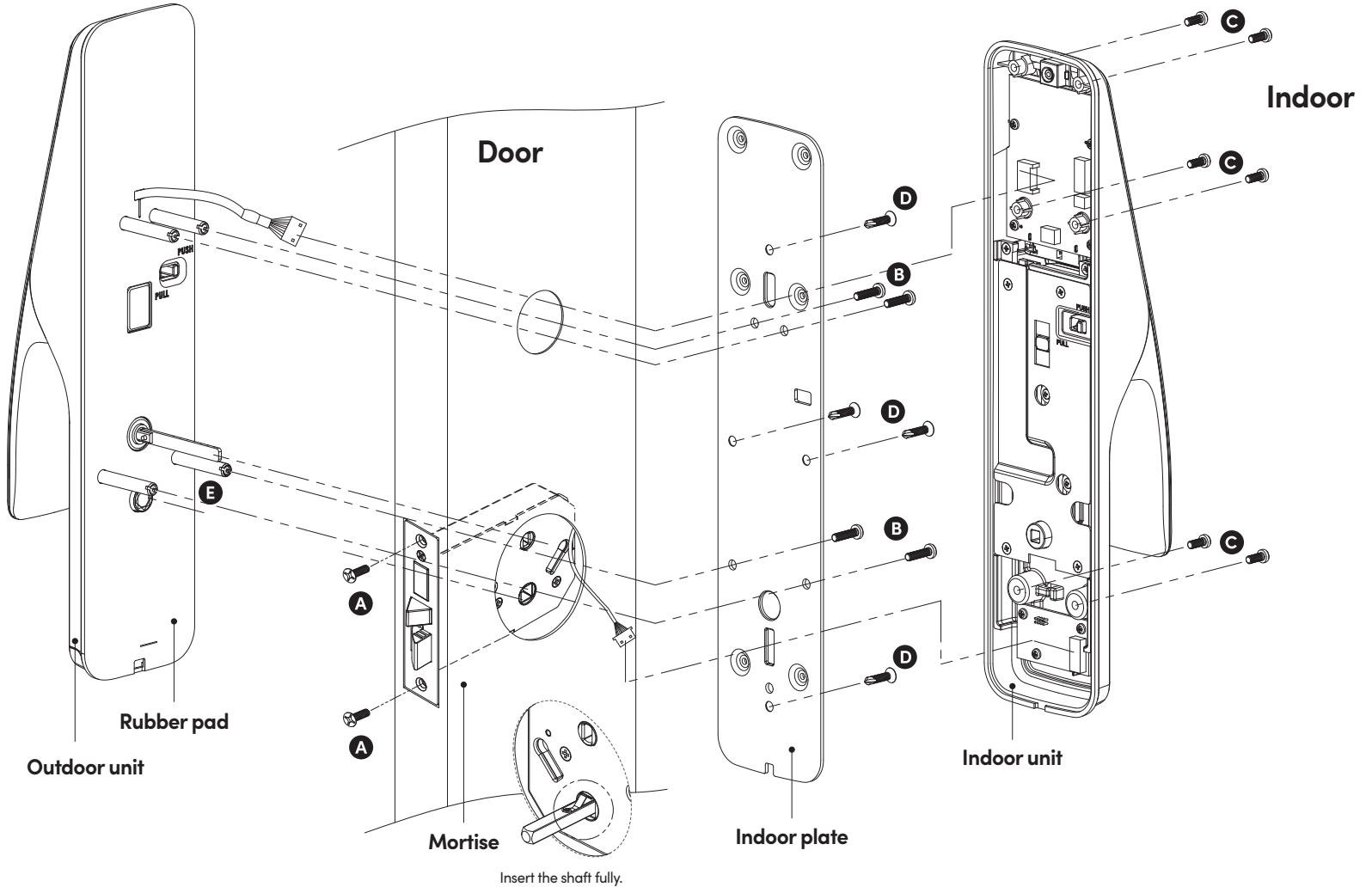


Striker

Dust Box

Spacer

NOTE: If the lock doesn't automatically lock due to the gap between the door and the frame, use the spacers to adjust the distance.



Screw Specifications

- | | | | | | |
|----------|--|-------------------------------------|----------|--|-----------------|
| A | | ST FH 4 X 20 x4 | C | | PH M4 X 20 x6 |
| B | | BH M5 X 20 x4
for 40 - 50mm door | D | | ST FH 4 X 20 x4 |
| | | BH M5 X 45 x4
for 50 - 70mm door | | | |

Mortise Shaft Specifications

- | | | |
|----------|--|--|
| E | | Shorter Shaft
for 40 - 50mm door |
| | | Longer Shaft
for 50 - 70mm door |